



AN URBAN MARVEL

WHERE LIFE IS COMPLETE

Guru Atman comprises of homes that define elegance and ease of living. Kalyan has also emerged as one of the most promising smart cities of the country. Get ready to be amazed by our extraordinary 1 BHK, 2 BHK and 3 BHK luxury homes that are nothing but the best.

Sprawling across 4.5 acres, Phase I of the project comprises of 5 towers that have already been sold out. Phase II of Guru Atman consists of 3 towers. Of these, tower A & B are Stilt+23 Storeys & H is Stilt+7. Welcome to a new sphere of housing that makes it easier to live in stylish homes at the heart of the city. Here you witness homes that gift you an opportunity to experience a new dimension of living as everything you could have ever wished for is just a step away. Find homes that make you feel at ease as you step into a world full of wonderful amenities and promises you the life of your dreams.





WHAT MAKES LIFE COMPLETE?

Enjoying the ravishing horizon, listening to the chirping of the birds, sitting in solace, enjoying the poetic beauty of the universe, are some of the things mankind derives utter joy from. Being amidst the ones you care about, the gentle waves of the sea and the smile of satisfaction that adorns the face of a loved one are some of the most precious achievements of an individual. As every day is nothing less of a hustle to break a sweat and be your best selves and excelling what you love to do is what makes life complete. The quest for the perfect life is what drives us all into finding the eternal truth of existence. As we step into a new tomorrow, what if you came to know that the voyage to the complete life has finally been discovered?

LIFESTYLE - 350M away

100+ Lifestyle Centres like Shopping Malls, Salons etc around you

HEALTH - 2.3KMs away

30+ Healthcare Centres around you

FITNESS - 750M away

20+ Fitness Centres around you

EDUCATION - 250M away

35+ Schools & Colleges around you

ENTERTAINMENT - 2.2KMs away

10+ Multiplex & Theatre Houses around you

360 DEGREE LIVING



Think of a world where every moment you can breathe the essence of comfort, paint your life with wellness and surround yourself by nature and future! What if you could find that place within the city of Mumbai, where every corner is the stroke of perfection, uniting mankind and innovation. A place that surrounds you from all sides to encircle your life with glee.

Introducing 360 degree living at Guru Atman, a premium residential project by Gurukrupa Group. A new concept in the sphere of housing that makes it easier to live the plush life - a universe that is built to provide you with more that surpasses the best. Guru Atman is all about life, that was never before known or created for mankind- a place that completes the true definition of Life.

KALYAN & ITS

FUTURE VISION



WITH GURU ATMAN, NOW YOU CONNECT TO THE FUTURE.

The nearest railway station is only 2.9 km away making sure that be it work or play, you reach places in just no time.

For all the young or inquisitive minds who want to learn from only the best, Guru Atman is surrounded by more than 20 educational institutions like Birla College of Arts, Science & Commerce and K. M. Agrawal College of Arts, Science & Commerce, Gurunanak English High School and Model English High School to just name a few, making every day commute a seamless task that every city dweller can only aspire for.

With only one hour away from the upcoming international airport, a home at Guru Atman will make sure that you travel the world much more than you ever dreamt of!

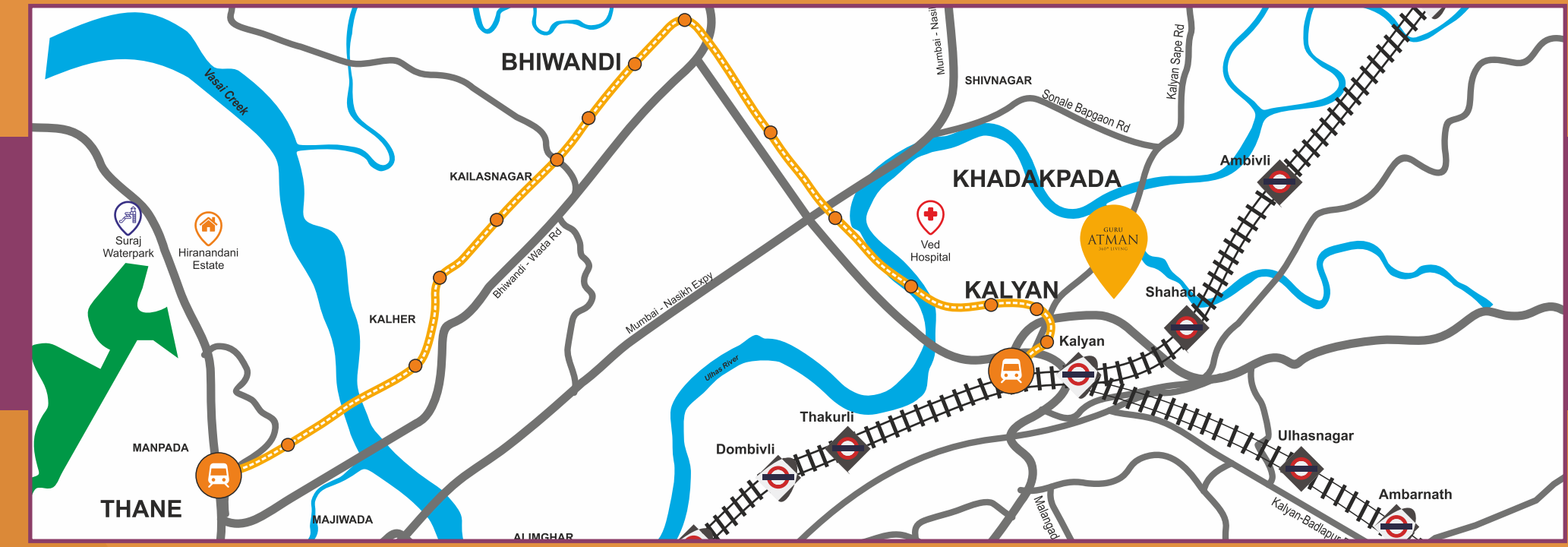
The nearest railway station is only 2.9 km away making sure that be it work or play, you reach places in just no time.

FUTURISTIC LOCATIONS

-  PROPOSED 26 ACRE TOWN PARK ADJACENT TO THE PROJECT
-  SHORTLISTED AS ONE OF THE FAST GROWING SMART CITIES OF INDIA
-  PROPOSED METRO RAIL CORRIDOR FROM THANE TO KALYAN VIA BHIWANDI
-  UPCOMING MMRDA MULTI-MODAL BUS RAPID TRANSPORT SYSTEM
-  PROPOSED LONGEST 21 KM FLYOVER FROM DOMBIVALI TO KALYAN



LOCATION MAP



PROPOSED METRO ROUTE

FLAWLESS AMENITIES, MATCHLESS STANDARDS



CLUBHOUSE

To make sure that after a tiring day at work or on boring weekends, life is enjoyed to the fullest at Guru Atman's world-class Club House.



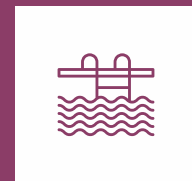
INDOOR GAME

Because the kid in you should never remain hidden! The indoor games at Guru Atman make sure that you feel alive after a match with your buddy or with your kids.



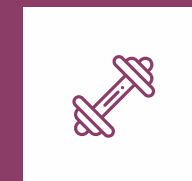
KIDS PLAY AREA

As childhood is one of the best-kept memories of man, every child must have the facility to jump, run and slide and decorate their t-shirts with some mud and fun only at the kid's play area.



SWIMMING POOL

Large crystal clear pool so that you can take a deep plunge of joy. At Guru Atman, you know you will never be alone when you have the swimming pool to adore!



GYMNASIUM

Workout with best in class equipments at our state of the art Gymnasium. Enjoy the benefits of active and healthy lifestyle



JOGGING TRACK

No more travelling long distances for keeping yourself healthy. The specially designed jogging tracks are perfect to feel energised during early morning runs or some evening challenges with your pals.



LANDSCAPE GARDEN

Specially designed for your morning or evening walks, so that you breathe in the purest form of air and get immersed into the beautifully landscaped garden at Guru Atman, here nature will surround you affectionately.



MULTIPURPOSE HALL

Because every celebration must be made big, Guru Atman provides lavish multipurpose halls that make sure that all parties or meetings are conducted easily.



INTERCOM

Now connect with your neighbour or the security guards in no time with the availability of intercom connections and save on your phone bills!

FLAWLESS UTILITIES, MATCHLESS LIFESTYLE



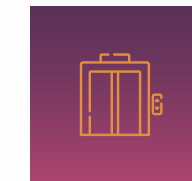
POWER BACKUP

Enjoy uninterrupted power supply in common areas with excellent provisions for power backup. Your daily activities will not be hampered, thanks to 24/7 power backup.



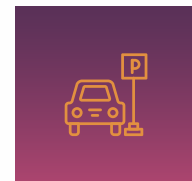
ADVANCED SECURITY SYSTEM

Guru Atman makes sure that your privacy is maintained at all times so that when you are at work, your loved ones at home feel at ease.



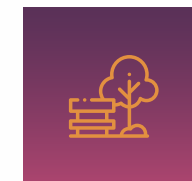
LIFT/ ELEVATOR

Comprising of Otis or equivalent spacious elevators, now reaching your floor without feeling cramped with



CAR PARKING

We understand that your car is equally as important as anyone in your family. Our spacious car parking areas makes sure your vehicles are kept secure and happy!



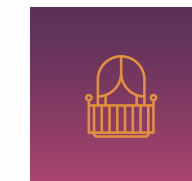
OPEN SPACE

With lush open spaces for all activities and events, you can now take a walk, run with glee or just enjoy the tranquil breeze of the wind with your loved ones!



FIREFIGHTING EQUIPMENT

No more worries in case of any emergency as the entire project is equipped with firefighting tools so that you live and sleep the peaceful life.



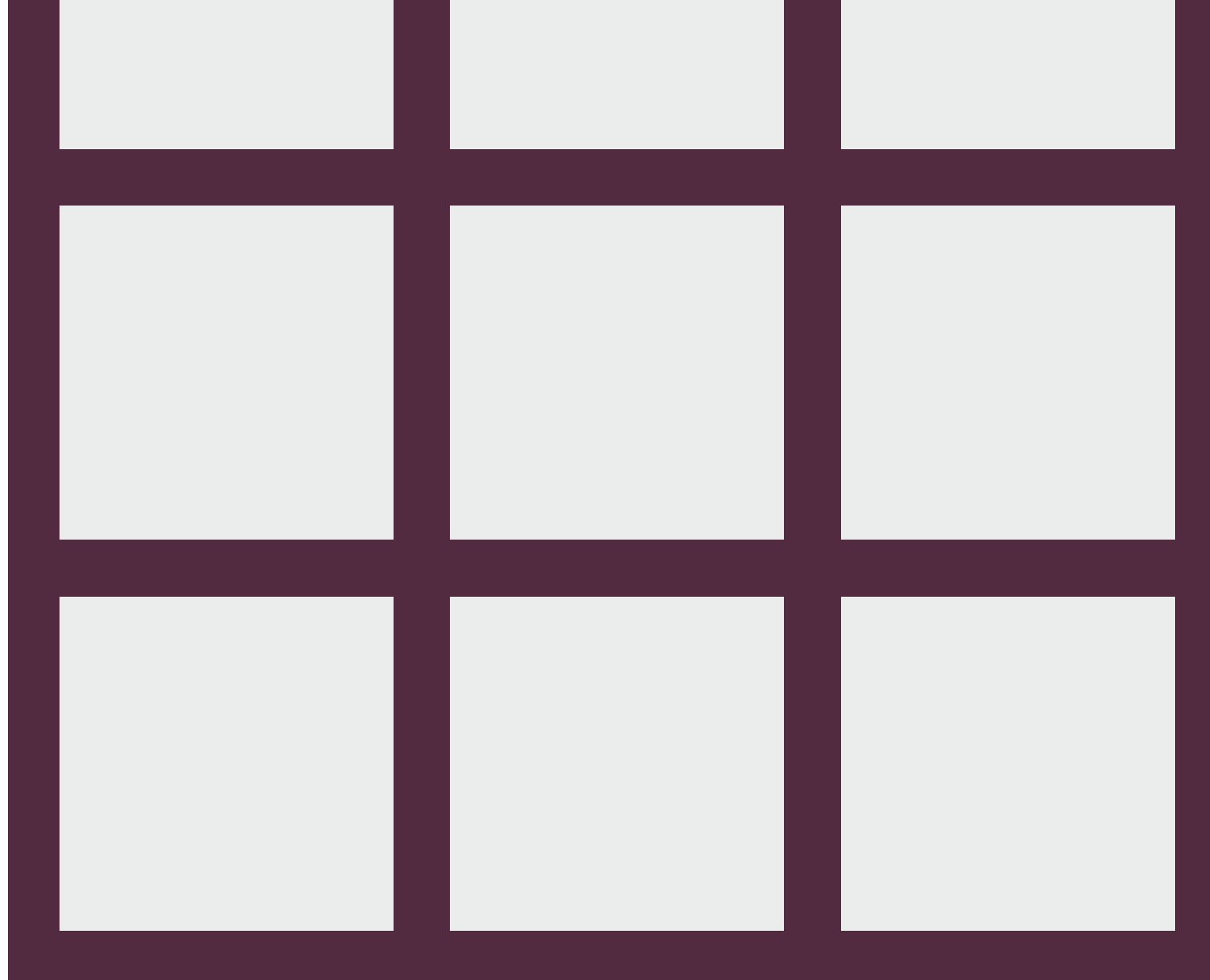
HOMES WITH TERRACE

Select homes with terrace spaces to make sure you never miss a sunset or a sunrise.



WATERBED FOUNTAIN

As you step inside this truly enthralling project, the waterbed fountain at the entrance simply adds to the aesthetics of this impressive landmark.



With the vast green landscapes of the city on one side and the major infrastructure of the city on the other, Guru Atman is situated at the heart of Kalyan in Mumbai. Comprising of homes built with the best of technology and innovation that matches the standards of the western countries of the world, you will be assured to be living in homes that echo perfection and superior quality. Designed by some of the most expert minds of the industry, intense attention has been paid to every corner so that your life blooms in harmony and delight as you experience a 360 degree living style.

Get amazed by our extraordinary 1 BHK, 2 BHK and 3 BHK luxury homes that are nothing but the best.

Expanding over a land of 4.5 acres, Phase I of the project comprises of 5 towers that have already been sold out.

Phase II of Guru Atman consist of 3 towers. Out of these, tower A & B are Stilt + 23 Storeys & H is Stilt+7.

“CONSTRUCTING HOMES, BUILDING HAPPINESS”





1, 2 & 3 BHK

FINEST LUXURY HOMES

A T K A L Y A N W E S T

High-Class
Amenities

Luxurious
Lifestyle

Seamless
Connectivity

Contemporary
Infrastructure

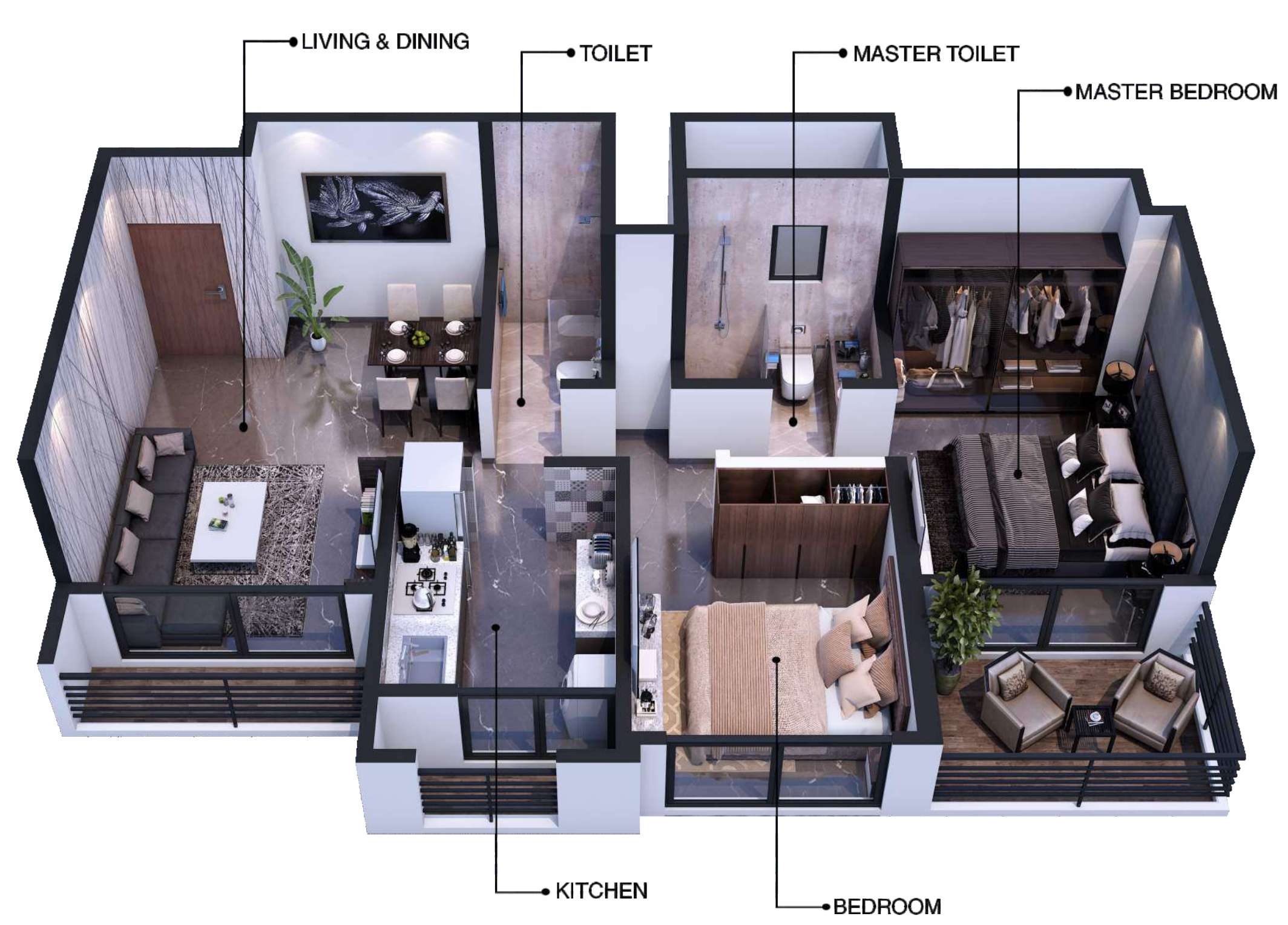
Future Ready
Project



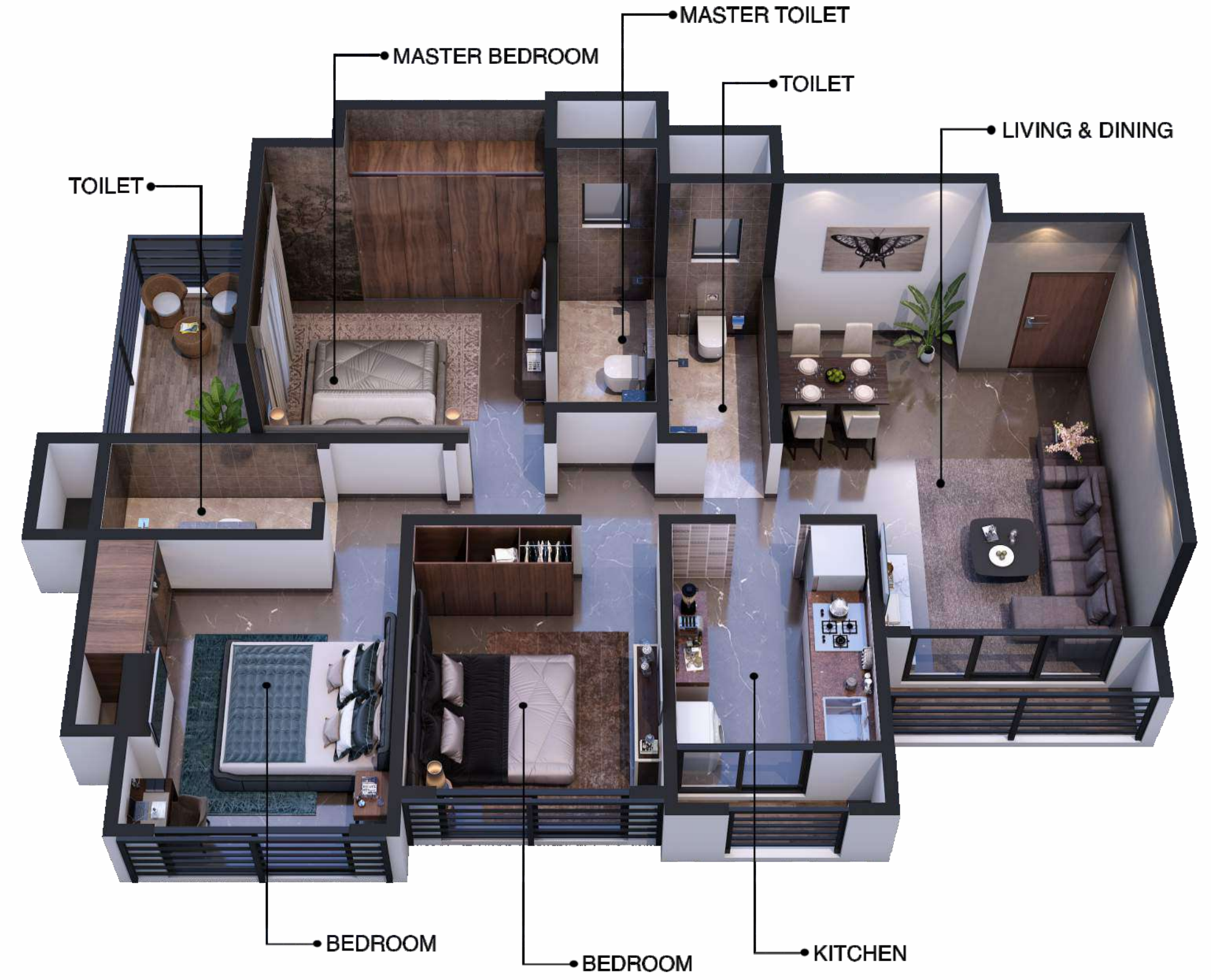
**DESIGNS
THAT MAKE
YOU FEEL LIKE
LIVING IN
PARADISE**

ISOMETRIC VIEW
2 & 3 BHK LUXURY HOMES





Disclaimer: Furniture & Fixture Shown in above view does not form the part of the standard product. It is for representation purpose only



Disclaimer: Furniture & Fixture Shown in above view does not form the part of the standard product. It is for representation purpose only

Becoming the pioneers in building homes that are the prime examples of architectural finesse, Gurukrupa Group is one of the leading real estate developers of the country. Having transformed more than 20 lakh sq. ft. of spaces into one of the most stunning homes. Bringing concepts of international living into the Indian scenario, Gurukrupa has changed the way apartments in India are being designed. Comprising of a team of global experts that match superlative standards of construction and service, Gurukrupa has become one of the most trusted real estate developers of India. From residential spaces, luxurious townships, modernised homes, advance commercial complexes, shopping centres and much more, Gurukrupa has excelled when it comes to constructing dreams that turn into reality





CALL: 022 6859 0269 | www.gurukrupagroup.com | www.guruatman.com

Site Address: Guru Atman Office, Opp. Vrundavan Residency, Kalyan-Murbad Road, Prem Auto Circle, Gauripada, Kalyan West, Maharashtra - 421301.



MahaRERA Registration Number: P51700020725
Available at website: <https://maharera.mahaonline.gov.in>



P51700020725

Disclaimer: All plans, drawings, amenities, features, specifications, other information, etc. mentioned in this brochure are indicative of the kind of development that is proposed and are subject to the approval of the respective authorities. All pictures, plans and views of building and apartments are artist's impression. The developers reserve the right to make changes at their sole discretion without prior notice obligation in the interest of the project. All written communication refers to the carpet area in sq. ft. for ease of reference. Final discretion remains with the developers.