

A PROJECT BY



**Site Add.: Satre Happynest**, Opp Udyan Darshan Building, Datar Colony, Kanjurmarg East, Mumbai - 400042.

**Call:** +91 22461 80369

**Regd. Office Add.:** G1 & G2, Bldg. D1, Vedant Complex, Vartak Nagar, Thane West 400606.

**Call:** +91 22461 80369 | **Web.:** [satre-happynest.com/](http://satre-happynest.com/)

Disclaimer: Satre Happynest is proposed for Ground + 35 Floors. The plans, specifications, image and other details herein are only indicative and subject to the approval of the concerned authorities. The Developer/Owner reserves the right to change any or all of these in interest of the development, without prior notice or obligation. Artist's impressions are used to illustrate the amenities, specification, image and other details and these may be applicable to select apartments only. Tolerance of +/-2% is possible in the unit areas on account of design and construction variance. All brands stated are subject to final decision of the project architect. This printed material does not constitute an offer and/or contract of any type between the Developer/Owner and the recipient. Any Purchase/Lease of this in development shall be governed by the terms and conditions of the agreement for Sale/Lease entered into between the parties, and no detail mentioned in this printed material shall in any way govern such transaction.



Maharera Registration. No: P51800054595, available on [www.maharera.mahaonline.gov.in](http://www.maharera.mahaonline.gov.in)

# SATRE HAPPYNEST

KANJURMARG (EAST)

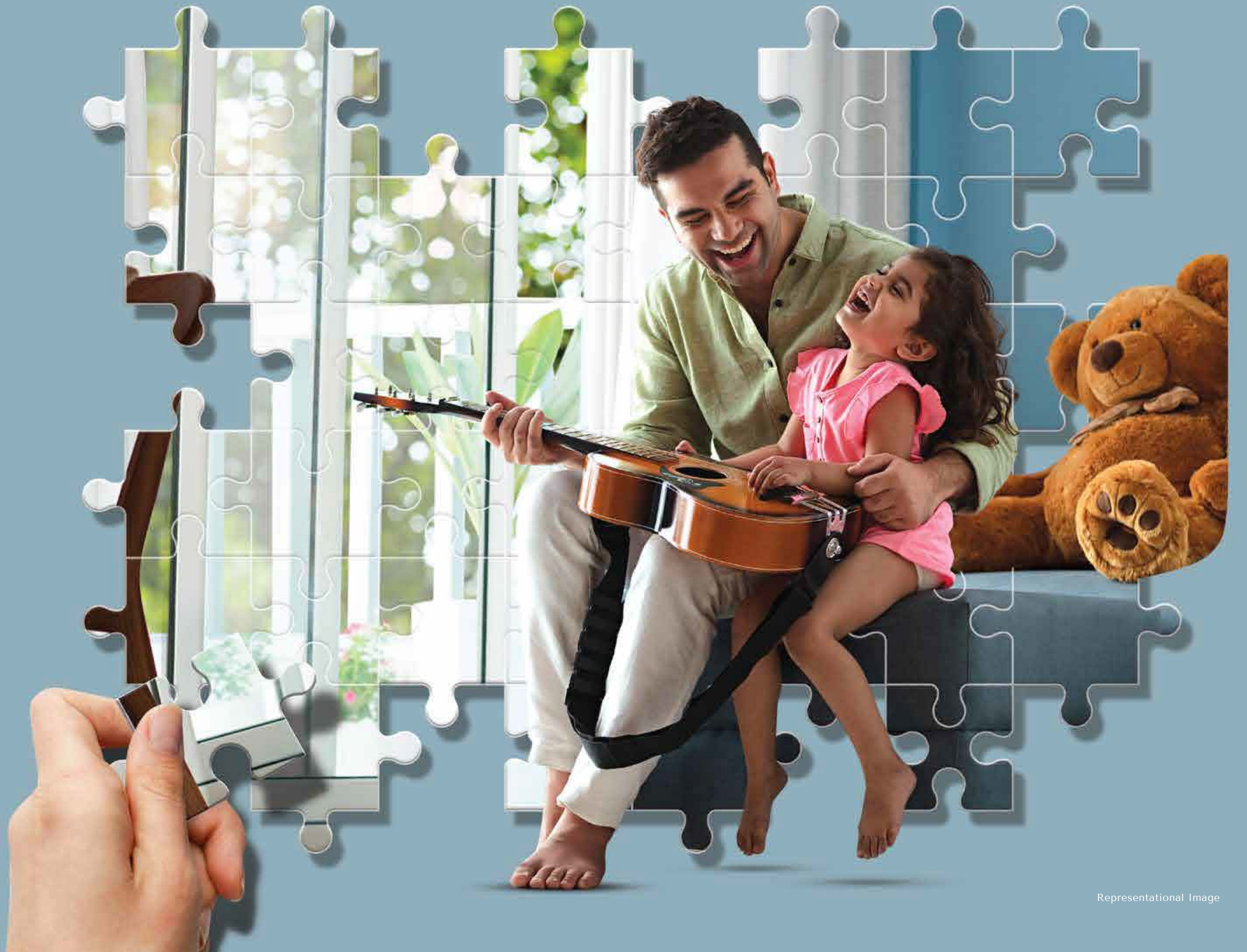


A HOME THAT FITS YOUR WORLD



A SPACE THAT  
**FITS YOUR  
NEEDS**

SMART-SIZED  
VAASTU COMPLIANT HOMES







A SKYLIFE THAT  
**FITS YOUR  
DREAMS**

---

LAVISH ROOFTOP  
INDULGENCES



LOCATION THAT  
**FITS YOUR  
CONVENIENCE**

ENTERTAINMENT TO SHOPPING,  
CONNECTED TO ALL YOUR DAILY NEEDS





PRESENTING

# A HOME THAT FITS YOUR WORLD



**SATRE  
HAPPYNEST**  
KANJURMARG (EAST)

SMART-SIZED 1 & 2 BED HAPPY HOMES



Artist's Impression

Representational Image





## PROJECT HIGHLIGHTS



35 Storeyed Tower



Smart Sized Homes  
420 Sq. Ft. Onwards



Lavish Indulgences  
at Sky Level



Fitness Centre  
on 35<sup>th</sup> Floor



Centrally Located  
at Kanjurmarg (E)



24x7 CCTV  
Surveillance



# KANJURMARG

## A WELL-CONNECTED PRIME ADDRESS WITH PANORAMIC VIEWS

**Kanjurmarg** a prosperous suburb in Central East Mumbai, boasts of excellent connectivity in all directions. It offers convenient access to various lifestyle avenues that are just a short drive away. Kanjurmarg serves as a crucial link between Navi Mumbai and South West Mumbai, offering diverse educational institutions, convenient transportation, quality healthcare facilities, and proximity to government offices.

**Embrace a prosperous tomorrow with a home that fits your world.**





# KANJURMARG, A LOCATION WITH LIMITLESS SATISFACTION



## Connectivity

- Bhandup Station
- Kanjurmarg Station
- Proposed EEH Vikhroli Metro Station
- Lal Bahadur Shastri Road
- Eastern Express Highway
- Western Express Highway
- International Airport
- Eastern Freeway



## Schools and Colleges

- St. Xaviers High School
- IIT Powai
- IBS Business School
- Bombay Scottish School
- Poddar International School



## Shopping and Entertainment

- Dmart
- Hometown
- Metro Mall
- R City Mall



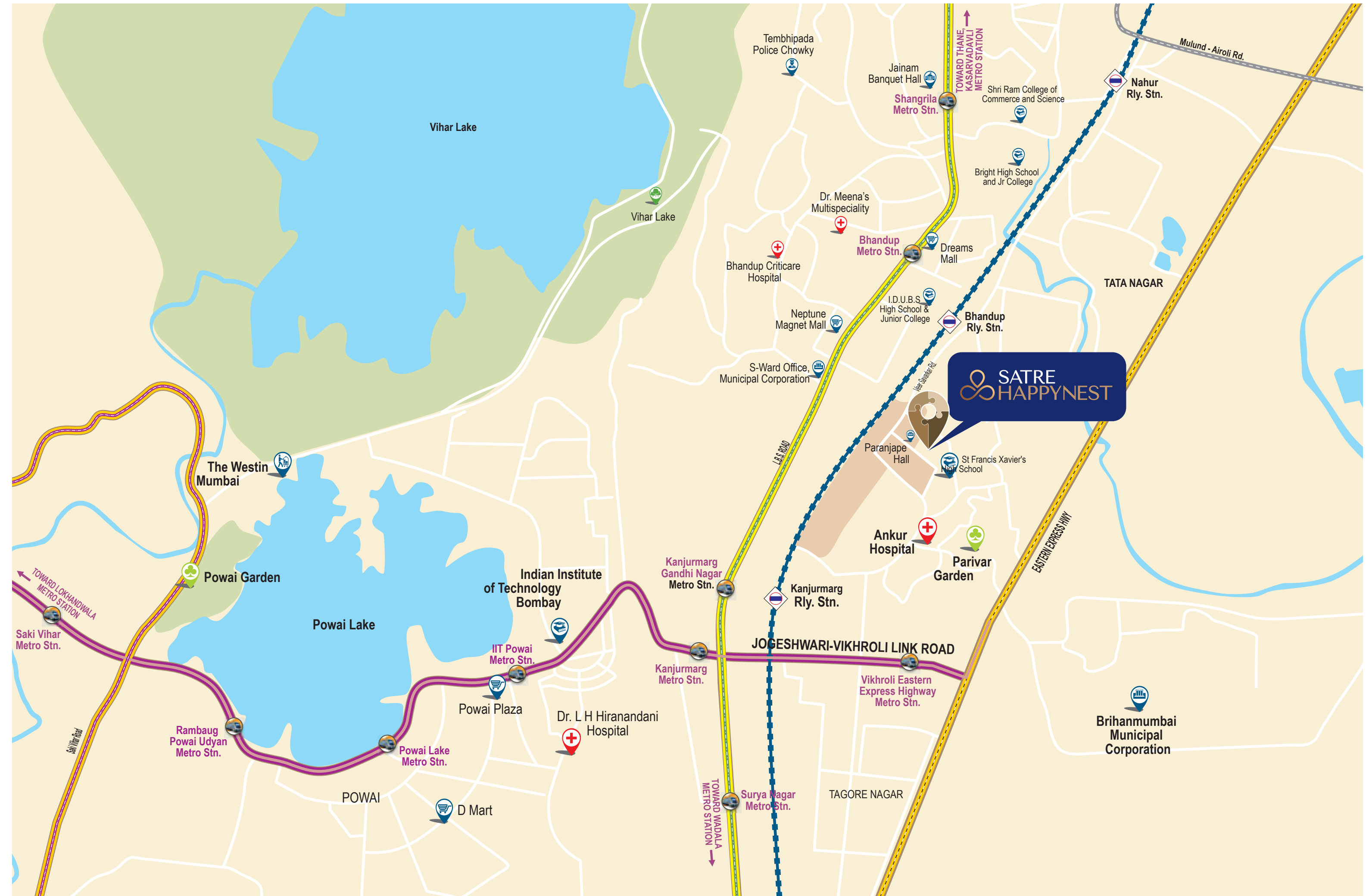
## Hospitals

- Fortis Hospital
- Hiranandani Hospital



## Business Hubs

- Lodha Supremus
- Embassy 247
- VNS Business Hub
- Godrej
- Kailash Business Park
- Powai Hiranandani
- Seepz
- BKC
- Thane
- Vashi
- South Mumbai





# KANJURMARG, A LOCATION THAT FITS YOUR CONVENIENCE

The epicenter of Central Mumbai offers the best of both worlds. It is situated amidst a peaceful vicinity but is still within striking distance of the best schools, colleges, hospitals, malls and multiplexes.



HOSPITALS & CLINICS



SCHOOLS & COLLEGES



SHOPPING MALLS & SUPERMARKETS



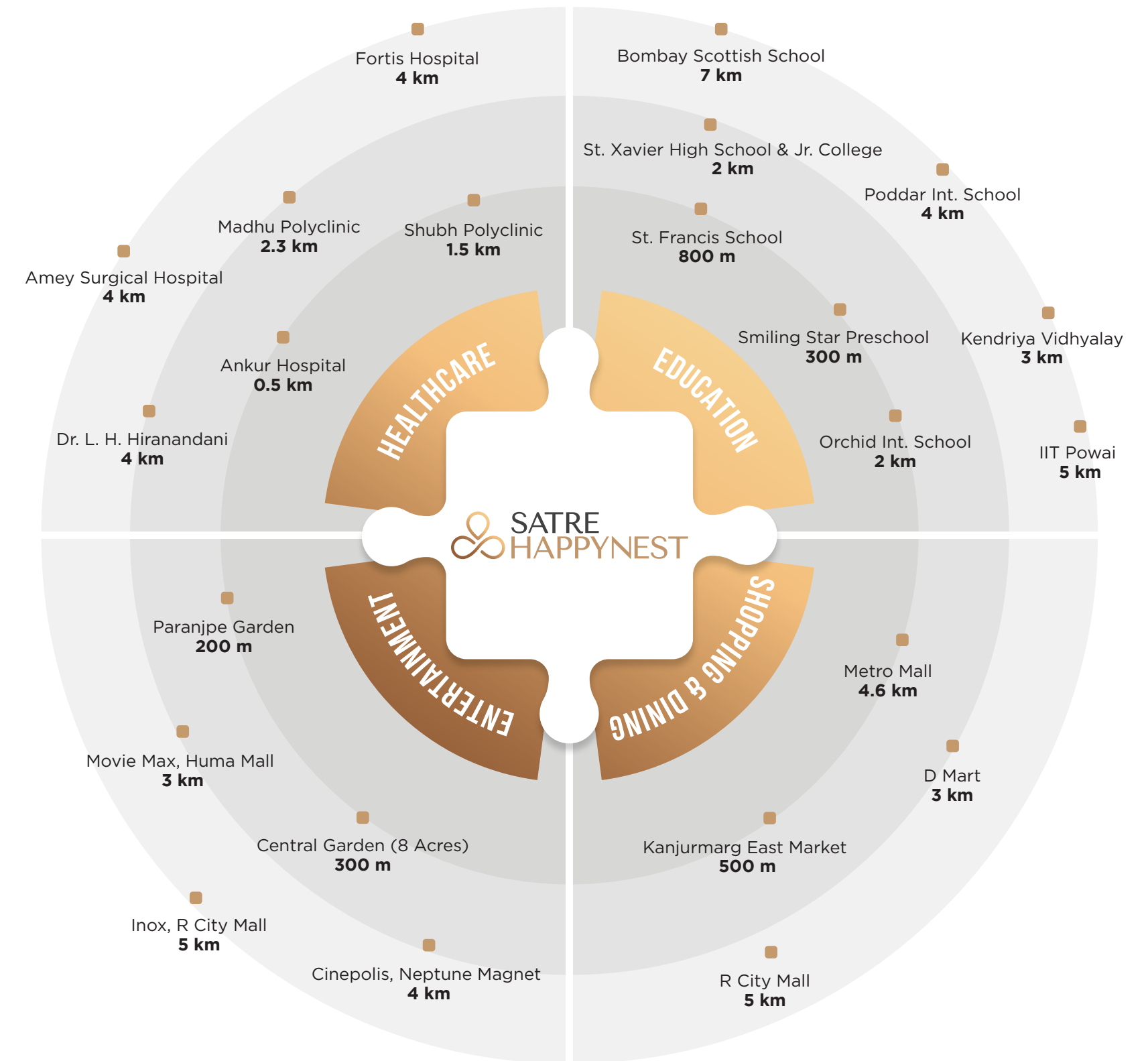
JAIN DERASAR & TEMPLES



FINE DINE RESTAURANTS



GARDENS





A RECREATIONAL SPACE THAT  
**FITS WITH  
QUALITY TIME**

---

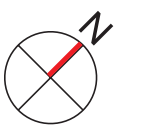
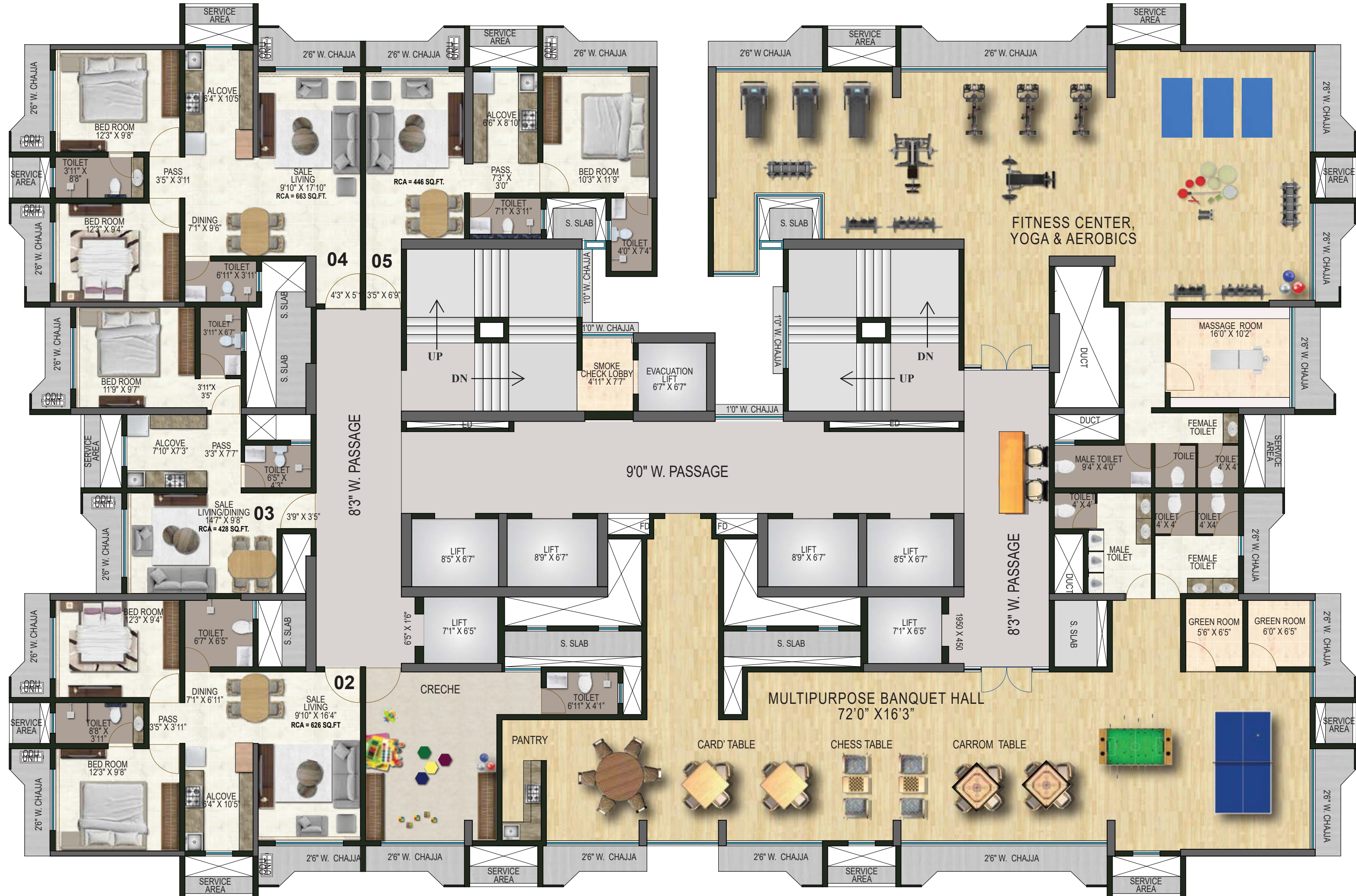
GAMES ARENA & FITNESS CENTRE  
At 35<sup>th</sup> Floor







AMENITY  
FLOOR PLAN  
35<sup>th</sup> Floor







Artist's Impression

## IDENTIFY YOUR STRENGTHS

STATE-OF-THE-ART FITNESS CENTRE





Artist's Impression

CELEBRATE LIMITLESSLY

MULTIPURPOSE BANQUET HALL



Artist's Impression

BOOST YOUR SPORTSMANSHIP SPIRIT

INDOOR GAMES AREA





Artist's Impression

## LET TODDLERS LEARN AMIDST FUN

CHILDREN'S CRÈCHE





AN EXPERIENCE THAT  
**FITS AMONG  
THE CLOUDS**

---

PREMIUM ROOFTOP  
LIFESTYLE AMENITIES





## RISING HIGH WITH VIBRANT MOMENTS

- 1 ROOFTOP POOL
- 2 KID'S POOL
- 3 REFLEXOLOGY PATH
- 4 ROOFTOP JOGGING TRACK
- 5 MULTIPURPOSE TURF
- 6 STARGAZING DECK
- 7 NANA NANI PARK
- 8 CHILDREN'S PLAY AREA





Artist's Impression

## HORIZON OF CALMNESS

ROOFTOP POOL





## LET KIDS DIVE INTO EXCITEMENT

KID'S POOL



## RISE ABOVE & RUN BEYOND LIMIT

ROOFTOP JOGGING TRACK



## REVIVE YOUR SENSES

REFLEXOLOGY PATHWAY



## IGNITE YOUR SPORTING SPIRIT

MULTIPURPOSE TURF





## REACH FOR THE STARS

STARGAZING DECK



## EXPERIENCE MOMENTS OF BLISS

NANA NANI PARK



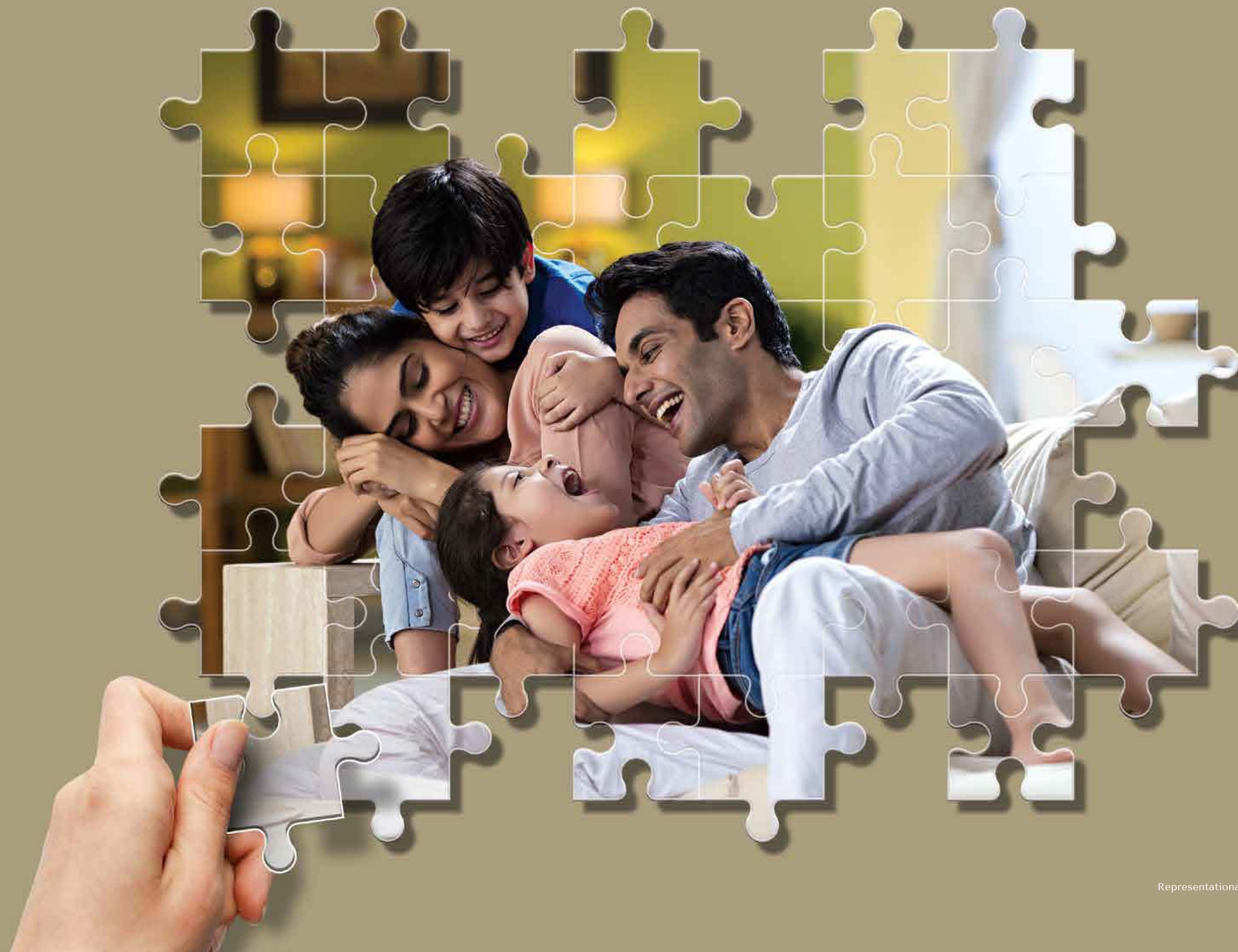
## WHERE LEARNING BECOMES AN ADVENTURE

CHILDREN'S PLAY AREA



A HOME THAT  
**FITS YOUR  
COMFORT**

APARTMENT & TOWER FEATURES







Artist's Impression

## IMPRESSIVE CRAFT OF AWESOMENESS

GRAND ENTRANCE LOBBY





DISCOVER COMFORT AND PEACE

SMART-SIZED LIVING AND DINING ROOM



DESIGNED TO INSPIRE A SENSE OF AWE

SPACIOUS BEDROOMS





Actual Photograph

A PLACE TO SATISFY YOUR HUNGER

WELL-PLANNED KITCHEN

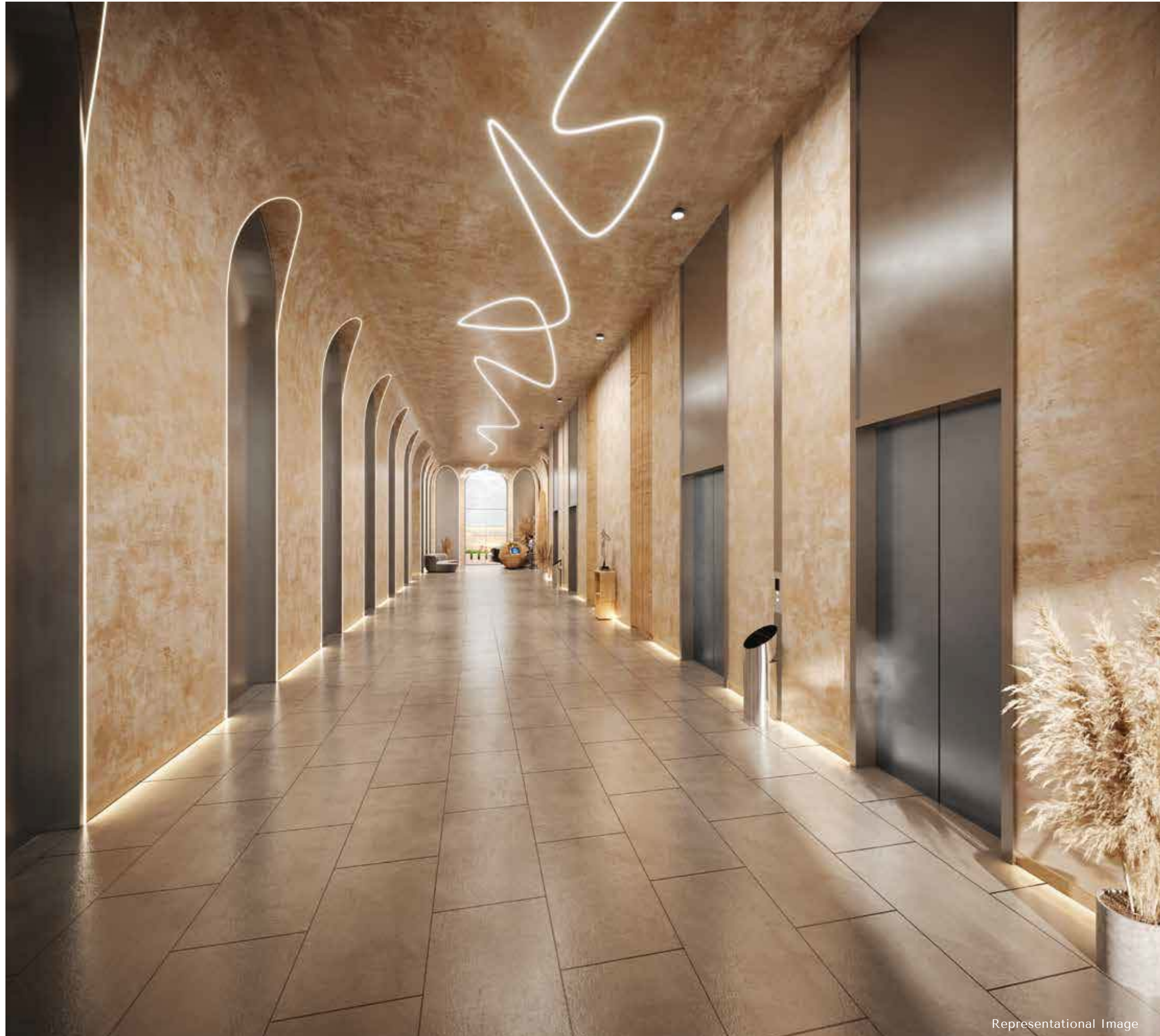


Actual Photograph

REMARKABLY ELEGANT

EXQUISITE RESTROOMS





Representational Image

## ELEVATE YOURSELF SWIFTLY

COMMON LOBBY WITH HIGH SPEED ELEVATORS



Representational Image

## A HOME FOR YOUR WHEELS TOO!

DEDICATED CAR PARKING SPACE



Representational Image

## SAFETY IS THE REAL PRIORITY

ADVANCED SECURITY WITH CCTV SURVEILLANCE



# PROJECT AT A GLANCE

## PROJECT HIGHLIGHTS

- 35 Storeyed Tower
- Smart-Sized Homes 420 Sq. Ft. Onwards
- Lavish Indulgences at Sky Level
- Fitness Centre on 35<sup>th</sup> Floor
- Centrally Located at Kanjurmarg (E)
- 24x7 CCTV Surveillance

## 35<sup>TH</sup> FLOOR AMENITIES

- State-Of-The-Art Fitness Centre
- Multipurpose Banquet Hall
- Indoor Games Area
- Children's Crèche

## SKY LEVEL FEATURES

- Rooftop Pool
- Kid's Pool
- Reflexology Path
- Elevated Jogging Track
- Cricket Turf with Bowling Machine
- Star Gazing Deck
- Nana Nani Park
- Children's Play Area

## APARTMENT FEATURES

- Grand Entrance Lobby
- Vastu Compliant Homes
- Smart-Sized Living and Dining Room
- Spacious Bedrooms
- Well Planned Kitchen
- Exquisite Restrooms
- Video Door Phone

## TOWER FEATURES

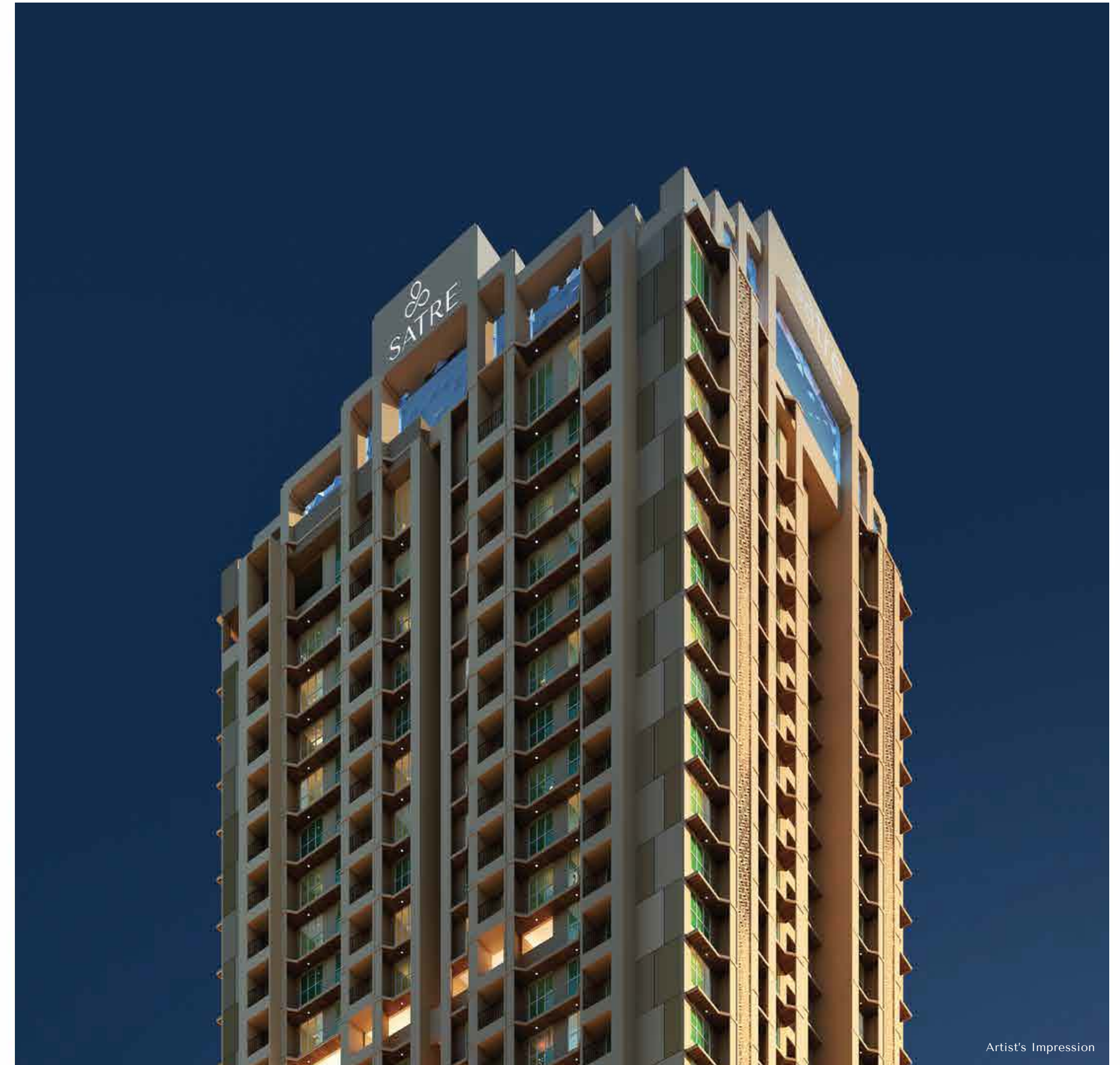
- Common Lobby with High Speed Elevators
- Dedicated Car Parking Space
- Efficient Fire Fighting System
- Advanced Security and CCTV surveillance

## INTERNAL FEATURES

- Vitrified Flooring Tiles
- Anodized/Powder Coated Aluminium Sliding Windows with Tinted Glass and Marble Sill
- Attractive Main Door with Wooden Door Frame, Elegant Handle and Lock
- Modular Switches with Points for TV, Telephone, Internet, AC, Water Purifier, Mixer, Fridge, Microwave and Geyser
- Granite Platform with Stainless Steel Sink for Kitchen
- Water Resistant Flush Doors for Toilet
- Sanitary Fittings of Reputed Make
- UPVC Concealed Piping for Toilets
- Gypsum Birla Putty with Plaster Walls with Oil Based Distemper Paints
- Concealed Copper Wiring with Isolator / MCB of Reputed Make

## EXTERNAL FEATURES

- Earthquake Resistant RCC Frame Structure



Artist's Impression

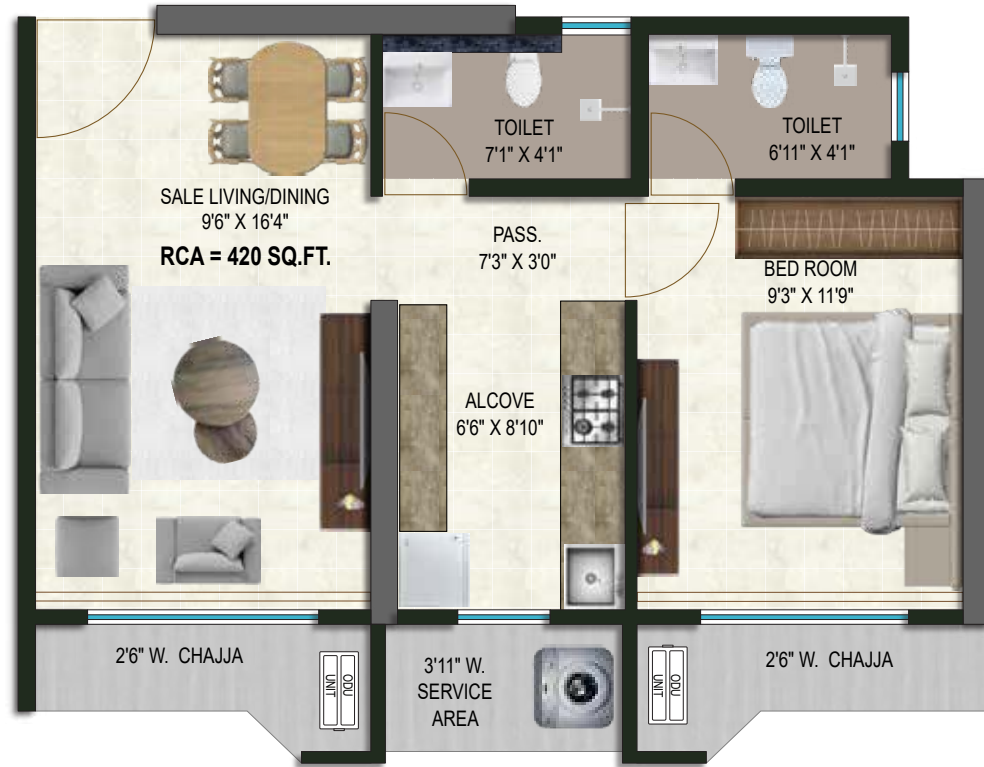








**1 BHK - TYPE 1**  
FLAT NO. 01 & 10  
RCA - 420 Sq. Ft.



**1 BHK - TYPE 2**  
FLAT NO. 03 & 08  
RCA - 428 Sq. Ft.



**2 BHK - TYPE 1**  
FLAT NO. 02 & 09  
RCA - 626 Sq. Ft.



**2 BHK - TYPE 2**  
FLAT NO. 04 & 06  
RCA - 663 Sq. Ft.



**1 BHK - TYPE 3**  
FLAT NO. 05 & 06  
RCA - 446Sq. Ft.



**3.5 BHK - JODI FLAT**  
FLAT NO. 04+05 & 06+07  
RCA - 1109 Sq. Ft.







Representational Image



SATRE | A BETTER  
TOMORROW

For the past decade and a half, we have been following the values of an ideal farming family with close ties to the soil. The graph of our construction business, standing on the three pillars of integrity, honesty and achievement, is now rising day by day.

Today, the name Satre is taken with utmost trust in the city of Mumbai. We believe that the creation of a dedicated construction area of over 1 million square feet is a testament to our success. The name of Satre is confidently associated with residential projects, commercial construction, redevelopment projects and MHADA projects.

With the best quality of construction, transparent business attitude and passion for innovation, we are building a new dimension and transforming Mumbai for a bright tomorrow.