

The *palette*  
SPACIOUS. SCENIC. SOCIAL.

# THINK



## SPACIOUS

The joy of spaciousness is like none other. Space creates a sense of openness and a feeling of freedom; it heralds in a brighter day.



## SCENIC

A good view is pleasing, not just to the eyes but to the soul. It elevates the mood. It soothes the senses. It makes for better living.



## SOCIAL

The need to socialize is innate. At the end of the day it is social interactions and experiences that make life richer and more fulfilling.

# Palette

**SPACIOUS.**  
**SCENIC.**  
**SOCIAL.**

There are places that give you the best of something. And then there's The Palette that gives you the best of everything. From the luxury of space to the visual of expanse to the thrill of being right where the buzz is, you have it all. It's as if the best of all worlds have come together. For a select few.



**WELCOME TO  
DADAR.  
WELCOME TO A  
MORE BALANCED  
LIFE.**

There's no single reason why Dadar stands apart from other residential localities of Mumbai. It could be its quaint neighbourhoods tucked away in a big bustling city of 24 million. It could well be its convenient location with the swanky suburb of Prabhadevi right next door. It could be the fact that despite being in South Mumbai it has its feet firmly rooted in culture and tradition. Or it could, of course, be a combination of all. Whichever way you look at it, Dadar possesses the perfect mix. So that you can lead a more wholesome balanced life.

An aerial night photograph of a modern skyscraper in a city. The building is illuminated from within, with warm yellow lights glowing from the windows. The building has a distinctive design with a central vertical element and a base that appears to be a podium or a series of stacked volumes. The surrounding city is visible, with other buildings and streets. Light trails from traffic on a major road in the foreground create a sense of movement and urban activity. The overall atmosphere is one of modern luxury and urban sophistication.

LUXURY IS  
GETTING  
REDEFINED BY  
SPACE. AND  
THERE'S A  
WORD TO  
DESCRIBE IT.

LUXSPACIOUS  
LIVING.

AND IT'S  
RIGHT HERE  
IN DADAR.



Standing tall in the heart of the vibrant city of Mumbai, The Palette is the epitome of luxspacious living. The sprawling 35-storey tower (with multi level podium parking) promises luxury apartments that redefine spaciousness.

The Palette, which has been tastefully designed by award winning architect Sanjay Puri also offers stunning views, including that of the Arabian Sea and the Bandra-Worli Sea Link.

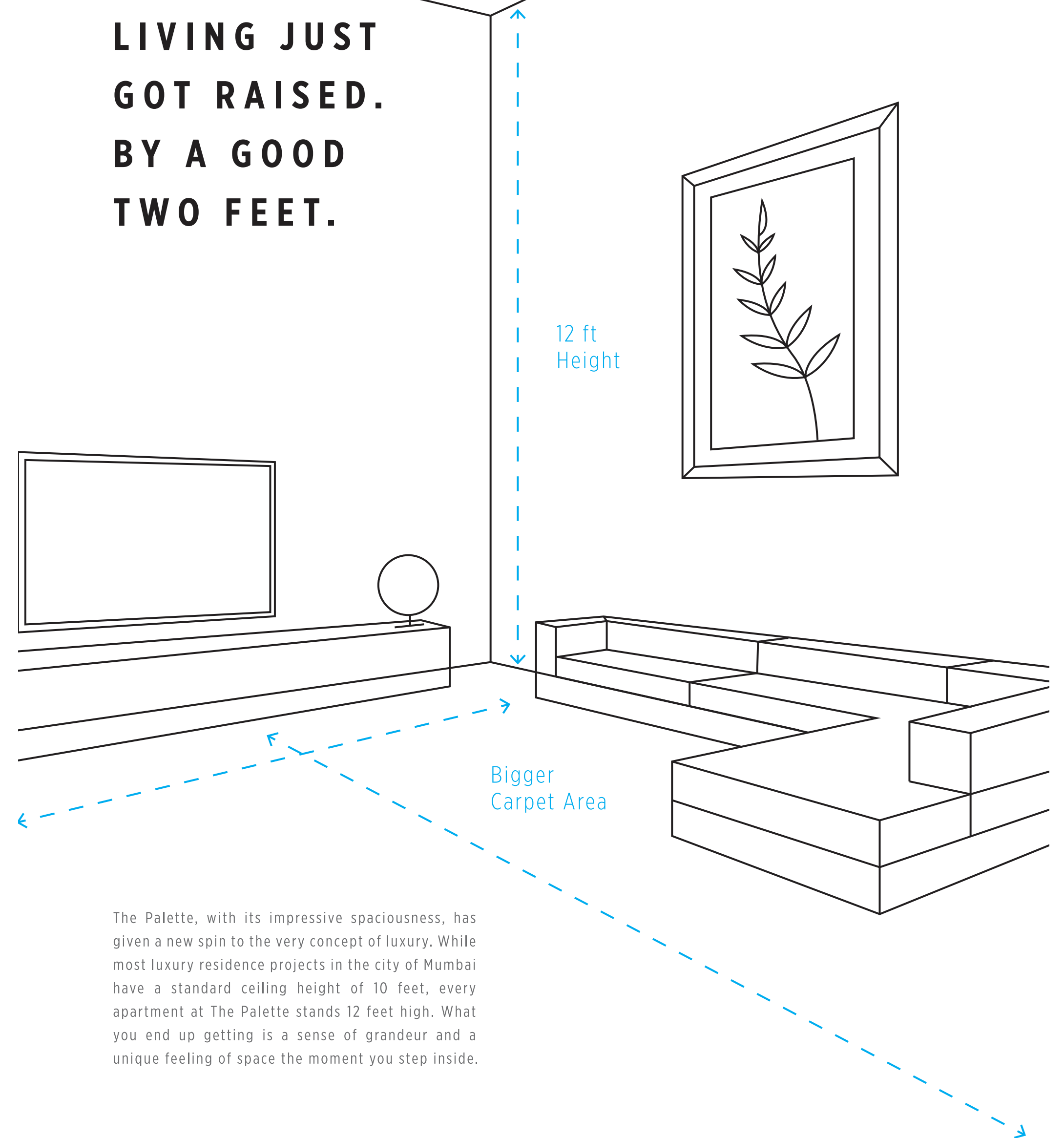
Located in the prime neighbourhood of Dadar, The Palette provides easy access to the city's biggest commercial hubs, classiest entertainment options as well as important places of worship. Add to that the choicest amenities and fittings that are worthy of a luxury residential tower and you'll see why The Palette will be an address that the discerning would love to have.

A LIFE MORE  
SPACIOUS





**THE  
BENCHMARK  
OF FINE  
LIVING JUST  
GOT RAISED.  
BY A GOOD  
TWO FEET.**



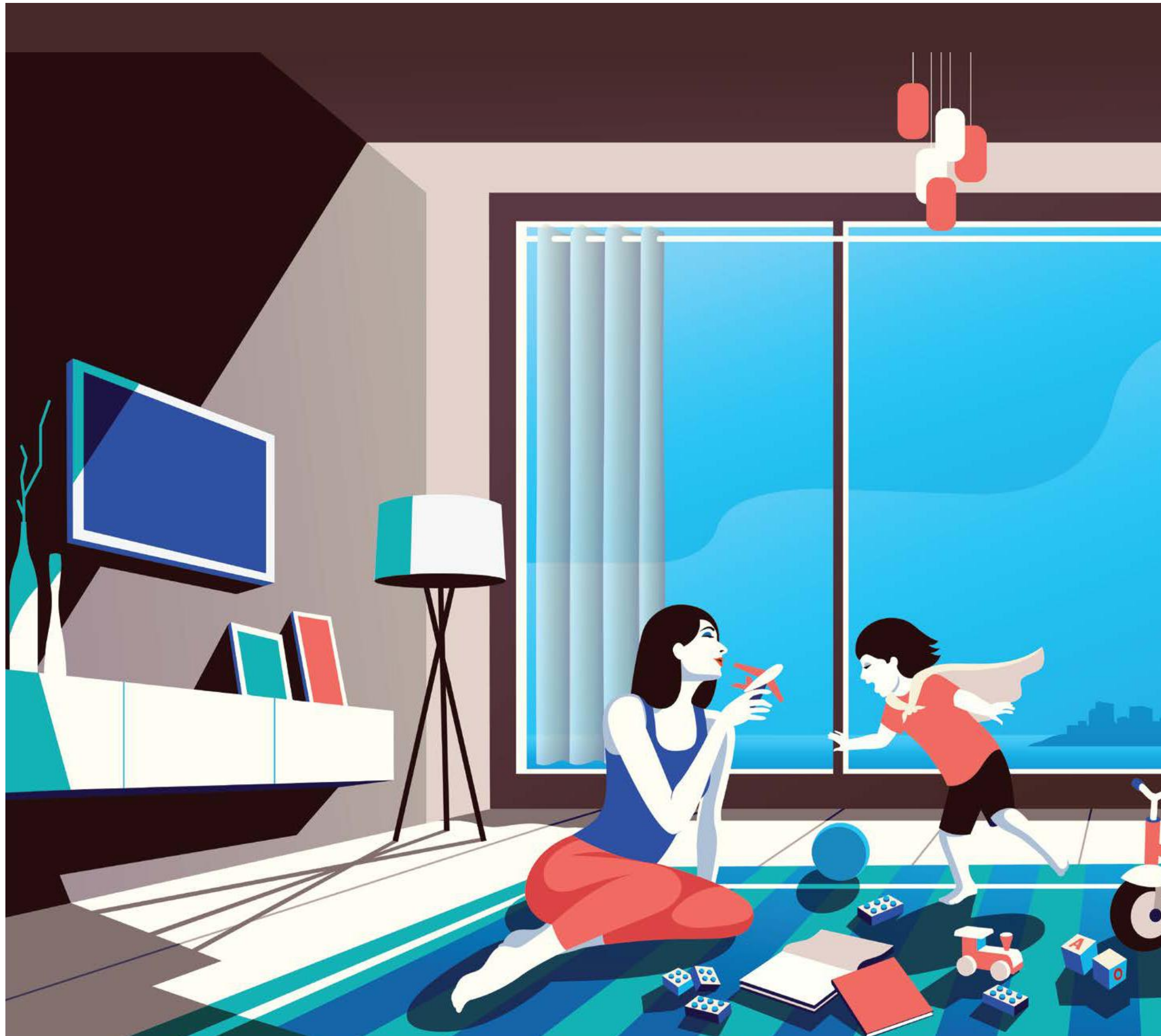
The Palette, with its impressive spaciousness, has given a new spin to the very concept of luxury. While most luxury residence projects in the city of Mumbai have a standard ceiling height of 10 feet, every apartment at The Palette stands 12 feet high. What you end up getting is a sense of grandeur and a unique feeling of space the moment you step inside.



**THERE'S MORE  
YOU GET IN EVERY  
APARTMENT.  
STARTING WITH  
THE NUMBER OF  
SQUARE FEET.**

It's not just the height of our apartments that set them apart on the spacious yardstick. It's the floor area too. A standard 2BHK apartment at The Palette commands a whopping carpet area of 880 square feet while a 3BHK measures a good 1404 square feet, giving you all the space you ever dreamed of. A grander look apart, a more spacious apartment reflects the foresightedness of the developer as it takes into consideration the need to provide for future generations.





**THERE ARE  
MANY PLUS  
POINTS OF A  
SPACIOUS  
APARTMENT.  
EVEN THE  
ENERGIES ARE  
POSITIVE.**

More  
Space



More  
Fresh Air



More  
Light



Vaastu  
Compliant



The vibe in any apartment of the Palette promises to be an altogether different one. The combination of a higher ceiling and a bigger carpet area results in more volume space in every apartment. Which in turn leads to more light, more ventilation and more fresh air. To add to that, all apartments have been designed keeping in mind the principles of Vastu Shastra. So that at the end of the day you can live a life that's not just luxurious, but positive, healthy and happy.

A LIFE MORE  
SCENIC



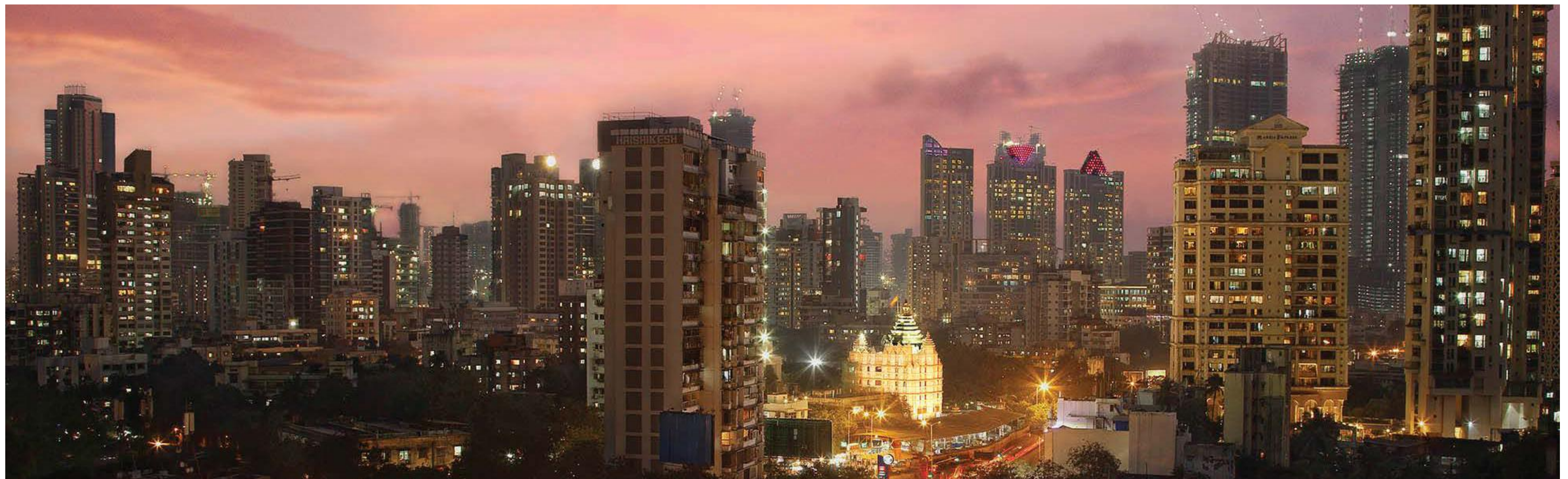


**IF YOU FIND  
YOURSELF  
GASPING FOR  
BREATH, IT  
MUST BE THE  
VIEW.**

To say that the views offered by the 35-storey Palette are stunning is quite an understatement. Residents of our 3BHK apartments will have a spectacular view of the Arabian Sea as well as the iconic Bandra-Worli Sea Link thanks to the sea facing balcony. And every apartment will have a stunning view of the bustling city of Mumbai, which gets even more breathtaking at night. Our apartments start at a height of 70 feet, thereby making sure that none of our residents miss out on the awesome views.



Bandra-Worli Sea Link View\*



Siddhivinayak Temple View\*

*\* 3 BHK apartments come fitted with sea facing balconies. Actual view may differ from apartment to apartment.*

# A LIFE MORE SOCIAL





**NIGHTLIFE.  
SHOPPING.  
ENTERTAINMENT.  
GOING OUT IS  
JUST AS  
REWARDING AS  
STAYING IN.**



Undoubtedly, one of the biggest offerings of The Palette is the high social life that it allows for. Residents have easy access to some of Mumbai's choicest 5-star hotels like Four Seasons, St Regis and Taj Lands End. Avid shoppers have the luxury of being minutes away from Palladium - the city's premier shopping destination. Nightlife lovers will have some of the most happening nightclubs and bars within easy reach. Movie buffs will find themselves a stone's throw away from PVR Cinemas. Whichever way you look at it, access to entertainment has never been this easy.



**PEACE OF  
MIND IS NOW  
CLOSER THAN  
YOU THINK.**

It's not just the entertainment seeker who will vouch for the location of The Palette. The religious minded will too. A few hundred metres to the west is the iconic Siddhivinayak Temple which draws thousands of devotees every week from near and far. A minute's walk towards the east will take you to the famous Portuguese Church. Peace of mind, as you can see, is much nearer than you imagined.





**BE IT BOARD  
MEETINGS OR  
PTA MEETINGS,  
STAY CONNECTED.**

Connectivity will be the last of your worries once you are at The Palette. Our residents will be well connected to business districts like BKC and Nariman Point as well as to world class commercial and business establishments in Lower Parel, Worli and Prabhadevi. The most prestigious schools like Bombay Scottish, Campion and Ambani International are easily accessible, as are leading colleges, hospitals and financial institutions. Zipping across the globe or within India will not be an issue either, as both the domestic and international airports are an easy commute.



LIVING ROOM



MASTER BEDROOM



KITCHEN



WASHROOM



A LIFE MORE  
REFRESHING



Swimming Pool



Landscape garden



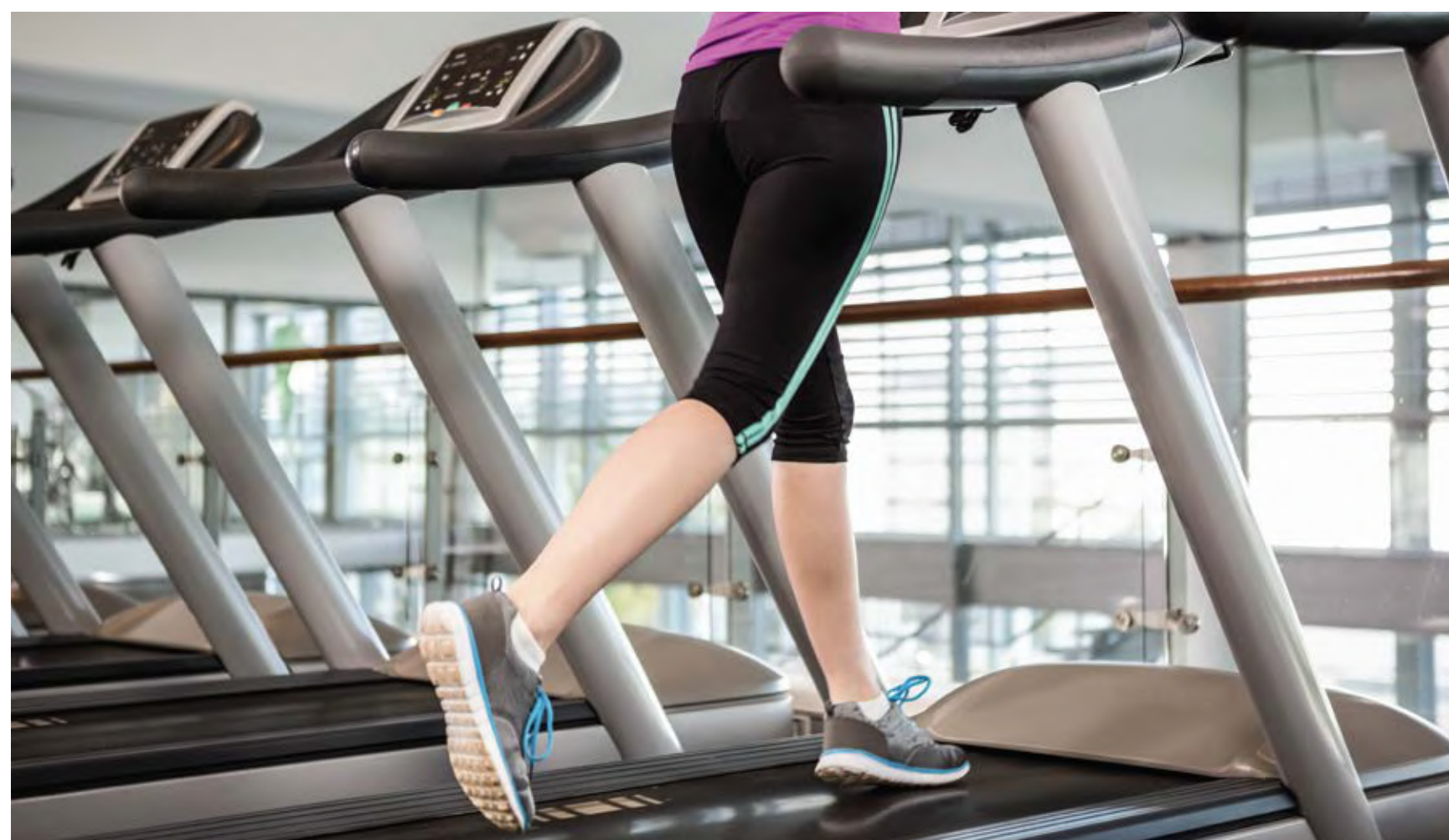
**TO GET A TASTE  
OF EXCLUSIVITY,  
JUST STEP OUT  
OF YOUR DOOR.**

The Palette has been specially designed for exclusivity with a focus on key luxury essentials for a good life. Take the elevators, for instance. There are four elevators in the tower and just four apartments per floor. Which means you will not have to share an elevator with other residents on the same floor. Exclusivity, as you will soon realise, begins the moment you step out of your door.



**CHOOSE A  
NOVEL WAY TO  
DE-STRESS.  
GO BACK HOME.**

Well appointed club house




Gymnasium



Multi level car parking

Everyone needs an outlet to unwind after a hard day's work. At The Palette, you have more than one, thanks to the luxury amenities provided on the premises. There's the podium level swimming pool to cool off, the state-of-the-art gym to shape up and the well appointed club house to sit back and relax. Not to mention the landscaped podium that will soothe your senses and provide that much needed touch of green to your busy city life.





**IT'S TRUE.  
LUXURY LIES IN  
THE SMALLEST  
OF DETAILS.**

Every apartment of The Palette has been designed with utmost attention to the minutest of details. All materials, fixtures and fittings have been hand selected to complement the urban lifestyle of our residents. Because ultimately, it's the smallest of things that come together and make for the perfect living experience.

**Internal Amenities :**

- Italian marble flooring in living room, passages and master bedroom
- Vitrified tiles in kitchen, children's room, guest bedroom and all bathrooms
- CP fittings of Grohe or equivalent
- Sanitary fittings of Roca, Duravit, Kohler or equivalent
- Premium quality granite kitchen platform fitted with SS type Franke sink or equivalent
- Teak wood frame doors with veneer and melamine finish on both sides
- Premium aluminium windows with anodized / powder coated finish and black granite / marble sills
- Three coat plastic emulsion paint over gypsum finish for internal walls

**Security features :**

- 24 hours security
- Videophone facility interconnecting all flats
- Fire fighting system
- Security cabin

# LOCATION MAP

The Palette, F P No. 823, S K Bole Road,  
Dadar West, Mumbai 400028



## THE VISIONARY BEHIND THE PALETTE

Designing The Palette was a unique experience for me. In response to the location, The Palette's contextual design elevates the residential floors 80 feet above the surroundings, creating a multi-level car parking below and breezy cross-ventilated sea oriented apartments above. The apartment design focuses on minimal circulation spaces, thereby creating maximum functional spaces within. With its towering building structure and impeccable design, The Palette has the potential to be a landmark in the bustling neighbourhood of Dadar as well as a unique living experience for its residents.



*Sanjay Puri*

- Sanjay Puri, Architect





S U R A J

**SURAJ.  
30 YEARS OF  
UNDERSTANDING  
SPACES, DELIVERING  
36 PROJECTS AND  
DEVELOPING OVER  
8 LACS SQ. FT. OF  
CONSTRUCTION.**



## VISION

To be an iconic real estate construction brand by staying at the forefront of design excellence, quality development and timely delivery.

Suraj Estate Developers is a marquee real estate construction brand in the island city of Mumbai. Established in 1986, Suraj has over 36 projects to its credit and has developed over 8 lac sq. ft. of construction spanning residential and commercial spaces in the prime locales of Mahim, Dadar and Prabhadevi. With over 28 years experience in the field of redevelopment, Suraj has independently chalked out a name for itself serving the housing needs of individuals and top corporate clientele.

Suraj has also constructed and sold exclusive residential apartment buildings to ICICI Bank Ltd, Union Bank of India and National Stock Exchange of India Ltd. The Palette at Dadar is its latest offering in the luxury residential portfolio. Besides this, the group has seven other ongoing residential projects between Dadar and Mahim.

**Our prestigious clientele to whom we've offered real estate solutions :**



[www.surajestate.com](http://www.surajestate.com)

## ONGOING LUXURY RESIDENTIAL PROJECTS



**TRANQUIL BAY, Dadar, Mumbai**  
Configuration: 3 BHK- 1300 sq.ft.  
One flat per floor  
Full view of the Arabian Sea  
No of storeys: 19



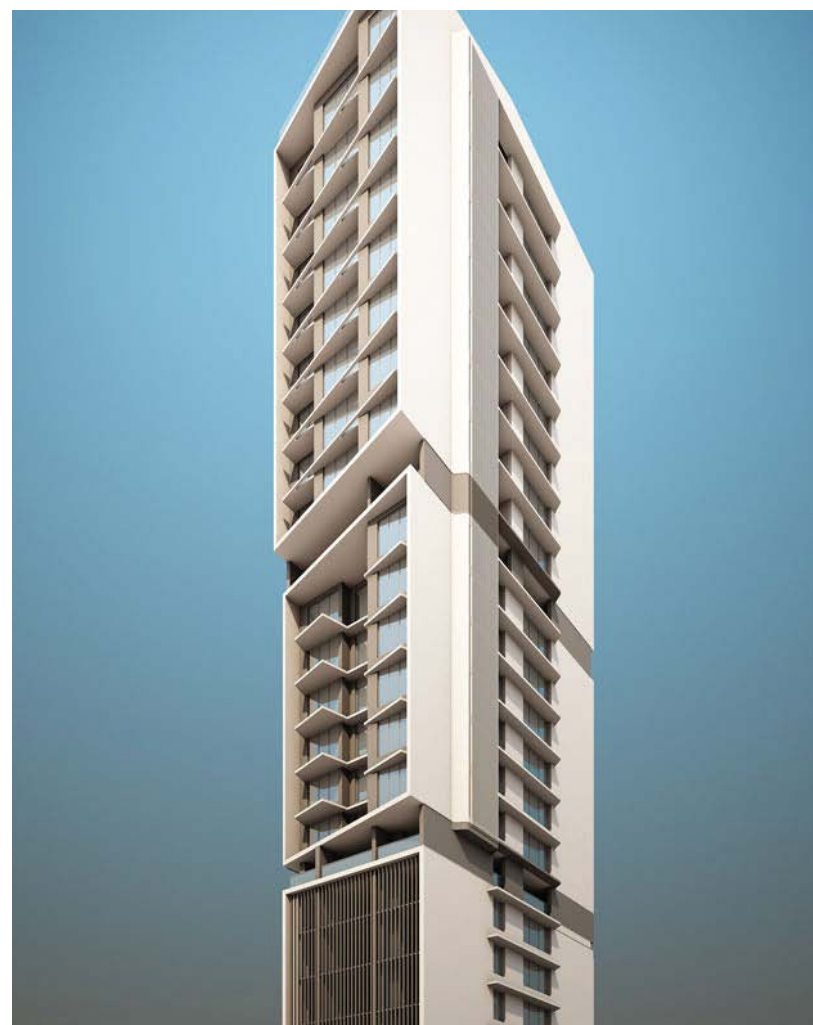
**NIRVANA, : Parel, Mumbai**  
Configuration: 2 BHK, 3 BHK Compact, 3 BHK large,  
5 apartments each floor  
No. of storeys: 57



**OCEAN STAR, Dadar, Mumbai**  
Configuration: 3 BHK Apartments - 1100 sq.ft. & 1230 sq.ft ,  
2 Apartments per floor  
No. of Storeys: 30



**LUMIERE, Dadar (West), Mumbai**  
Configuration - 2 BHK - 745 sq.ft.  
No.of storeys - 14



**MANGIRISH, Prabhadevi, Mumbai**  
Configuration - 4 BHK - 1452 sq.ft.& 1975 sq.ft.  
One flat per floor  
No. of storeys - 22



**ELIZABETH, Dadar, Mumbai**  
Configuration: 2 BHK - 710 sq.ft.;  
3 BHK - 977 sq.ft.  
No. of storeys: 11

**Project Financed by**



**Partners & Associates :**

**Design Architect :** M/s Sanjay Puri Architects

**Liasoning Architect :** Archvision Architects

**Structural Consultant :** Dr. Kelkar Designs Pvt. Ltd.

**MEP Consultant :** Electro-Mech Consultants Pvt. Ltd.

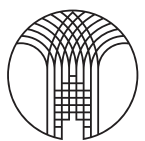
**Piling Contractor :** Valecha Engineering Ltd.

**Solicitors :** M/s Little & Co.

**Branding & Communication :** Colab India

**The** *palette*  
SPACIOUS. SCENIC. SOCIAL.

**Disclaimer :** The plans, specifications, images and other details herein are only indicative and the Developer / Owner reserves the right to change any or all of these in the interest of the development. This printed material does not constitute an offer and/or contract of any type between the Developer/Owner and the recipient. Any purchaser /lessee of this development shall be governed by the terms and conditions of the Agreement for Sale / Lease entered into between the parties, and no details mentioned in this printed material shall in any way govern such transactions.



SURAJ

**For inquiries, call 7506717467 / 7506787148 or email [sales@surajestate.com](mailto:sales@surajestate.com)**

**Corporate Office :** 15-B, Mahim Mata Building, Marinagar Colony, Mahim West, Mumbai 400016

**Site & Sales Office :** The Palette, F P No. 823, S K Bole Road, Dadar West, Mumbai 400028

**[www.palettebysuraj.com](http://www.palettebysuraj.com)**

**MahaRERA No.:** P51900008207 is available on <https://maharera.mahaonline.gov.in>